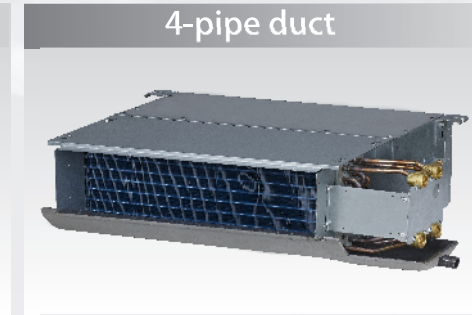
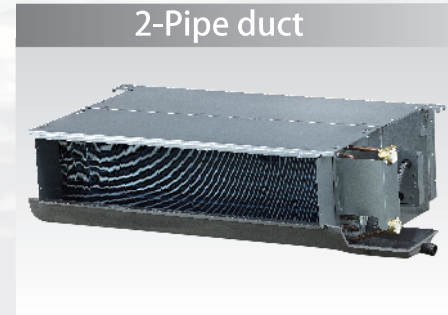


Model APFCK1-				300R 300RA	400R 400RA	600HRN4
Air flow	H/M/L	m <sup>3</sup> /h	500/450/400	630/560/500	1000/880/800	
	H/M/L	CFM	300/270/240	370/330/300	590/520/470	
Cooling	Capacity	H/M/L	kW	3.04/2.79/2.56	3.79/3.58/3.38	5.709/4.85/4.36
	Water flow rate	H	l/h	523	652	982
	Water pressure drop	H	kPa	10.1	14.5	20.2
Heating	Capacity	H/M/L	kW	5.13/4.69/4.04	6.41/5.86/5.11	9.6/8.36/7.48
	Water pressure drop	H	kPa	8.8	12.8	18.1
Power supply		V/ph/Hz		220-240/1/50		
Power input		H	W	60	60	125
Electric heater capacity (A)		W		1000	1000	/
Sound pressure level		H/M/L	dB(A)	38/35/33	40/37/35	42/39/37
Fan motor	Type		Low noise 4-speed fan motor			
	Quantity		1			
Fan	Type		Centrifugal, forward-curved Blades			
	Quantity		2		4	
Coil	Row		3			
	Max. Working pressure		MPa	1.6		
	Diameter		mm	Φ9,52	Φ8	
Panel	Dimensions		W×H×D	mm	1050×18×470	1420×10×755
	Packing		W×H×D	mm	1120×172×540	1500×110×870
	Net weight		kg	4	9	
	Gross weight		kg	7	12	
Body	Dimensions		W×H×D	mm	850×235×400	1200×198×655
	Packing		W×H×D	mm	1080×310×460	1380×265×720
	Net weight		*/A	kg	22.5/23	32.6
	Gross weight		*/A	kg	25/27	36.3
Pipe connection	Water inlet/outlet pipe		Inch	RC3/4		
	Drain pipe		mm	ODΦ18		

Note:  
 1. H: high fan speed; M: medium fan speed; L: low fan speed.  
 2. Cooling conditions: entering water 7°C, temperature rise 5°C, entering air temperature 27°C DB/19°C WB.  
 Heating conditions: entering water 50°C, entering air temperature 20°C DB, the same water flow as the cooling conditions.  
 3. The noise is tested in the semi-anechoic test room.  
 4. \* for models without electric heater, A for models with electric heater.

# Duct



## Features

- Capacity range: 200~2000CFM, available in 2-pipe and 4-pipe.
- 220-240V/1Ph/50Hz power supply is standard, 208-230V/1Ph/60Hz can be customized.
- Wide external static pressure supplying. Three external static pressure (12Pa/30Pa/50Pa) settings for added flexibility.
- A patent design is able to prevent abnormal noise caused by blowing flins.
- Higher efficient heat exchange for complete contranantat flow.
- Safe factory-installed electric heater is optional.
- Standard extended drainage pan for protecting your ceiling better.
- Return air plenum and filter are standard.
- Left or right hand piping connections, field convertible.
- Fresh air supply makes life healthier and more comfortable.

2-Row Duct										
12Pa ESP	APFCDR2-200(E)S12	APFCDR2-300(E)S12	APFCDR2-400(E)S12	APFCDR2-500(E)S12	APFCDR2-600(E)S12	APFCDR2-800(E)S12	APFCDR2-1000(E)S12	APFCDR2-1200(E)S12	APFCDR2-1400(E)S12	APFCDR2-1400(E)S30
30Pa ESP	APFCDR2-200(E)S30	APFCDR2-300(E)S30	APFCDR2-400(E)S30	APFCDR2-500(E)S30	APFCDR2-600(E)S30	APFCDR2-800(E)S30	APFCDR2-1000(E)S30	APFCDR2-1200(E)S30	APFCDR2-1400(E)S30	APFCDR2-1400(E)S30

3-Row Duct										
12Pa ESP	APFCD-200(E)S12	APFCD-300(E)S12	APFCD-400(E)S12	APFCD-500(E)S12	APFCD-600(E)S12	APFCD-800(E)S12	APFCD-1000(E)S12	APFCD-1200(E)S12	APFCD-1400(E)S12	APFCD-1400(E)S30
30Pa ESP	APFCD-200(E)S30	APFCD-300(E)S30	APFCD-400(E)S30	APFCD-500(E)S30	APFCD-600(E)S30	APFCD-800(E)S30	APFCD-1000(E)S30	APFCD-1200(E)S30	APFCD-1400(E)S30	APFCD-1400(E)S30
50Pa ESP	50Pa can be customized									

4-Row Duct										
12Pa ESP	12Pa can be customized									
30Pa ESP	APFCDR4-200(E)S30	APFCDR4-300(E)S30	APFCDR4-400(E)S30	APFCDR4-500(E)S30	APFCDR4-600(E)S30	APFCDR4-800(E)S30	APFCDR4-1000(E)S30	APFCDR4-1200(E)S30	APFCDR4-1400(E)S30	APFCDR4-1400(E)S30
50Pa ESP	50Pa can be customized									

4-Pipe Duct										
12Pa ESP	APFCD-200FS12	APFCD-300FS12	APFCD-400FS12	APFCD-500FS12	APFCD-600FS12	APFCD-800FS12	APFCD-1000FS12	APFCD-1200FS12	APFCD-1400FS12	APFCD-1400FS30
30Pa ESP	APFCD-200FS30	APFCD-300FS30	APFCD-400FS30	APFCD-500FS30	APFCD-600FS30	APFCD-800FS30	APFCD-1000FS30	APFCD-1200FS30	APFCD-1400FS30	APFCD-1400FS30
50Pa ESP	50Pa can be customized									

## 2-Row Duct

Model APFCDR2-				200S12 200S30 200ES30	300S12 300S30 300ES30	400S12 400S30 400ES30	500S12 500S30 500ES30	600S12 600S30 600ES30
Air flow	H/M/L	m <sup>3</sup> /h		340/255/170	510/385/255	680/510/340	850/640/425	1020/765/510
	H/M/L	CFM		200/150/100	300/225/150	400/300/200	500/375/250	600/450/300
External Static pressure			Pa	S12 models: 12; S30 models: 30				
Cooling	Capacity	H/M/L	kW	2/1.74/1.52	2.7/2.31/2.03	3.6/3.11/2.66	4.4/3.74/3.25	5.5/4.58/4.09
	Water flow rate	H	l/h	344	464	619	757	946
	Water pressure drop	H	kPa	5	11	19	22	14
Heating	Capacity	H/M/L	kW	3.2/2.75/2.37	4.3/3.74/3.23	5.4/4.64/4.05	6.8/5.78/5.07	8.1/6.77/5.92
	Water pressure drop	H	kPa	4.2	9.5	15.5	18.3	11.8
Power supply			V/ph/Hz	220-240/1/50				
Power input	12Pa	H	W	31	50	60	80	97
	30Pa	H	W	45	60	67	89	110
Electric heater capacity			E	W	550	1100	1100	1600
Sound pressure level	12Pa	H/M/L	dB(A)	36/34/29	38/33/29	38/35/31	39/36/32	40/36/33
	30Pa	H/M/L	dB(A)	41/37/31	41/37/32	42/39/33	45/41/34	46/41/35
Fan motor	Type			Low noise 4-speed fan motor				
	Quantity			1	1	1	1	1
Fan	Type			Centrifugal, forward-curved Blades				
	Quantity			1	2	2	2	2
Coil	Row			2				
	Max. Working pressure			MPa 1.6				
Body	Diameter			mm Φ9.52				
	Dimensions	W×H×D	mm	741×241×522	841×241×522	941×241×522	941×241×522	1161×241×522
	Packing	W×H×D	mm	790×260×550	890×260×550	990×260×550	990×260×550	1210×260×550
	Net weight	*E	kg	13.9/15.4	16.5/18	19.2/20.7	19.2/20.7	22/24
	Gross weight	*E	kg	16.2/17.7	19/20.5	21.6/23.1	21.6/23.1	25/27
Pipe connection	Water inlet/outlet pipe			Inch RC3/4				
	Drain pipe			mm ODΦ24				

Model APFCDR2-				800S12 800S30 800ES30	1000S12 1000S30 1000ES30	1200S12 1200S30 1200ES30	1400S12 1400S30 1400ES30
Air flow	H/M/L	m <sup>3</sup> /h		1360/1020/680	1700/1275/850	2040/1530/1020	2380/1785/1190
	H/M/L	CFM		800/600/400	1000/750/500	1200/900/600	1400/1050/700
External Static pressure			Pa	S12 models: 12; S30 models: 30			
Cooling	Capacity	H/M/L	kW	7.5/6.33/5.68	8.97/6.16/4.41	10.8/9.13/7.93	12.3/10.46/9.27
	Water flow rate	H	l/h	1290	1531	1858	2116
	Water pressure drop	H	kPa	14	22	39	46
Heating	Capacity	H/M/L	kW	11.9/8.8/8.25	13.5/11.72/10.03	16.5/14.05/12.24	19.5/16.85/14.63
	Water pressure drop	H	kPa	12.5	19	32.6	40.1
Power supply			V/ph/Hz	220-240/1/50			
Power input	12Pa	H	W	140	172	205	216
	30Pa	H	W	130	171	212	249
Electric heater capacity			E	W	2200	3200	3200
Sound pressure level	12Pa	H/M/L	dB(A)	42/37/33	44/39/34	46/40/35	48/42/37
	30Pa	H/M/L	dB(A)	46/41/36	47/43/37	48/44/38	49/44/39
Fan motor	Type			Low noise 4-speed fan motor			
	Quantity			2	2	2	2
Fan	Type			Centrifugal, forward-curved Blades			
	Quantity			4	4	4	4
Coil	Row			2			
	Max. Working pressure			MPa 1.6			
Body	Diameter			mm Φ9.52			
	Dimensions	W×H×D	mm	1461×241×522	1566×241×522	1856×241×522	2022×241×522
	Packing	W×H×D	mm	1510×260×550	1615×260×550	1905×260×550	2070×260×550
	Net weight	*E	kg	30.9/33.4	33.4/36.4	38.5/42	42.1/46.1
	Gross weight	*E	kg	34.5/37	37/40	42/45.5	47.5/51.5
Pipe connection	Water inlet/outlet pipe			Inch RC3/4			
	Drain pipe			mm ODΦ24			

Note:

1. H: high fan speed; M: medium fan speed; L: low fan speed.
2. The data is the performance in relevant external static pressure.
3. Cooling conditions: entering water 7 °C, temperature rise 5 °C, entering air temperature 27 °C DB/19 °C WB.  
Heating conditions: entering water 50 °C, entering air temperature 20 °C DB, the same water flow as the cooling conditions.
4. The noise is tested in the semi-anechoic test room.
5. \* for models without electric heater, E for models with electric heater.

## 3-Row Duct

Model APFCDR-				200S12 200S30 200ES30	300S12 300S30 300ES30	400S12 400S30 400ES30	500S12 500S30 500ES30	600S12 600S30 600ES30
Air flow	H/M/L	m <sup>3</sup> /h		340/255/170	510/385/255	680/510/340	850/640/425	1020/765/510
	H/M/L	CFM		200/150/100	300/225/150	400/300/200	500/375/250	600/450/300
External Static pressure			Pa	S12 models: 12; S30 models: 30				
Cooling	Capacity	H/M/L	kW	2.2/1.9/1.68	3.1/2.7/2.3	4/3.4/2.95	4.6/3.96/3.45	5.8/4.88/4.45
	Water flow rate	H	l/h	378	533	688	791	998
	Water pressure drop	H	kPa	14	26	18	24	36
Heating	Capacity	H/M/L	kW	3.5/3.08/2.59	5.3/4.61/3.98	6.8/5.85/5.1	7.9/6.95/6	9.8/8.6/7.4
	Water pressure drop	H	kPa	10.5	21.8	16.9	22.3	31.6
Power supply			V/ph/Hz	220-240/1/50				
Power input	12Pa	H	W	33	53	66	87	100
	30Pa	H	W	49	64	75	93	114
Electric heater capacity			E	W	550	650	1100	1600
Sound pressure level	12Pa	H/M/L	dB(A)	35/32/26	36/33/27	37/34/28	40/36/30	42/38/32
	30Pa	H/M/L	dB(A)	41/37/31	42/38/32	43/39/33	44/40/34	45/41/35
Fan motor	Type			Low noise 4-speed fan motor				
	Quantity			1	1	1	1	1
Fan	Type			Centrifugal, forward-curved Blades				
	Quantity			1	2	2	2	2
Coil	Row			3				
	Max. Working pressure			MPa 1.6				
Body	Diameter			mm Φ9.52				
	Dimensions	W×H×D	mm	741×241×522	841×241×522	941×241×522	941×241×522	1161×241×522
	Packing	W×H×D	mm	790×260×550	890×260×550	990×260×550	990×260×550	1210×260×550
	Net weight	*E	kg	14.6/16.1	17/18.5	20.2/21.7	20.2/21.7	23/25
	Gross weight	*E	kg	16.9/18.4	19.5/21	22.6/24.1	22.6/24.1	26/28
Pipe connection	Water inlet/outlet pipe			Inch RC3/4				
	Drain pipe			mm ODΦ24				

Model APFCDR-				800S12 800S30 800ES30	1000S12 1000S30 1000ES30	1200S12 1200S30 1200ES30	1400S12 1400S30 1400ES30
Air flow	H/M/L	m <sup>3</sup> /h		1360/1020/680	1700/1275/850	2040/1530/1020	2380/1785/1190
	H/M/L	CFM		800/600/400	1000/750/500	1200/900/600	1400/1050/700
External Static pressure			Pa	S12 models: 12; S30 models: 30			
Cooling	Capacity	H/M/L	kW	8.2/6.88/6.25	9.7/8.6/5.7	11.9/8.8/3.5	12.5/10.8/9.44
	Water flow rate	H	l/h	1410	1548	1892	2150
	Water pressure drop	H	kPa	39	32	39	45
Heating	Capacity	H/M/L	kW	13.6/11.97/10.2	16/14.24/12	20.1/18.27/15.43	21/18.7/15.75
	Water pressure drop	H	kPa	33.8	30.7	34.6	40.1
Power supply			V/ph/Hz	220-240/1/50			
Power input	12Pa	H	W	145	180	210	222
	30Pa	H	W	154	180	220	278
Electric heater capacity			E	W	2200	2200	3200
Sound pressure level	12Pa	H/M/L	dB(A)	43/39/33	45/41/35	46/42/36	48/44/38
	30Pa	H/M/L	dB(A)	46/42/36	47/43/37	48/44/38	49/45/39
Fan motor	Type			Low noise 4-speed fan motor			
	Quantity			2	2	2	2
Fan	Type			Centrifugal, forward-curved Blades			
	Quantity			4	4	4	4
Coil	Row			3			
	Max. Working pressure			MPa 1.6			
Body	Diameter			mm Φ9.52			
	Dimensions	W×H×D	mm	1461×241×522	1566×241×522	1856×241×522	2022×241×522
	Packing	W×H×D	mm	1510×260×550	1615×260×550	1905×260×550	2070×260×550
	Net weight	*E	kg	31.9/34.4	34.4/37.4	39.5/43	43.1/47.1
	Gross weight	*E	kg	35.5/38	38.1/41.1	43/46.5	48.4/52.4
Pipe connection	Water inlet/outlet pipe			Inch RC3/4			
	Drain pipe			mm ODΦ24			

Note:

1. H: high fan speed; M: medium fan speed; L: low fan speed.
2. The data is the performance in relevant external static pressure.
3. Cooling conditions: entering water 7 °C, temperature rise 5 °C, entering air temperature 27 °C DB/19 °C WB.  
Heating conditions: entering water 50 °C, entering air temperature 20 °C DB, the same water flow as the cooling conditions.
4. The noise is tested in the semi-anechoic test room.
5. \* for models without electric heater, E for models with electric heater.

## 4-Row Duct

Model APFCDR4-			200S30	300S30	400S30	500S30	600S30	800S30	1000S30	
Air flow	H/M/L	m <sup>3</sup> /h	340/255/170	510/385/255	680/510/340	850/640/425	1020/765/510	1360/1020/680	1700/1275/850	
	H/M/L	CFM	200/150/100	300/225/150	400/300/200	500/375/250	600/450/300	800/600/400	1000/750/500	
External Static pressure			Pa	30	30	30	30	30	30	
Cooling	Capacity	H/M/L	kW	2.52/1.6/1.87	3.3/2.85/2.47	4.4/3.72/3.22	4.8/4.18/3.64	6.2/5.38/4.65	8.8/7.43/6.57	9.5/8.18/7.06
	Water flow rate	H	l/h	430	568	757	826	1066	1514	1634
	Water pressure drop	H	kPa	2.6	5	8.1	9.8	15.4	12.3	18
Heating	Capacity	H/M/L	kW	4.1/3.51/3.03	5.8/5.05/4.35	7.1/6.11/5.33	8.5/7.04/6.28	10.5/9.03/7.77	14.5/12.38/10.88	16.3/13.45/12.05
	Water pressure drop	H	kPa	2.2	4.2	6.9	8.1	12.7	10	15.4
Power supply			V/ph/Hz	220-240/1/50						
Power input	H	W	50	65	80	98	110	155	180	
Sound pressure level	H/M/L	dB(A)	37/33/27	38/34/28	38/35/29	40/35/29	41/36/31	42/37/32	44/39/33	
Fan motor	Type	Low noise 4-speed fan motor								
	Quantity	1	1	1	1	1	2	2	2	
Fan	Type	Centrifugal, forward-curved Blades								
	Quantity	1	2	2	2	2	4	4	4	
Coil	Row	4								
	Max. Working pressure	MPa	1.6							
	Diameter	mm	Φ9.52							
Body	Dimensions	W×H×D	mm	741×241×522	841×241×522	941×241×522	941×241×522	1161×241×522	1461×241×522	1566×241×522
	Packing	W×H×D	mm	790×260×550	890×260×550	990×260×550	990×260×550	1210×260×550	1510×260×550	1615×260×550
	Net weight	kg	15.3	17.5	20.7	20.7	23.5	32.9	35.4	
	Gross weight	kg	17.6	20	23.1	23.1	26.5	36.5	39.1	
	Pipe connection	Water inlet/outlet pipe	Inch	RC3/4						
	Drain pipe	mm	OD Φ24							

Model APFCDR4-			1200S30	1400S30	1500S30	1500S50	2000S30	2000S50		
Air flow	H/M/L	m <sup>3</sup> /h	2040/1530/1020	2380/1785/1190	2550/2100/1300	2550/2100/1300	3400/2550/1700	3400/2550/1700		
	H/M/L	CFM	1200/900/600	1400/1050/700	1500/1240/760	1500/1240/760	2000/1500/1000	2000/1500/1000		
External Static pressure			Pa	30	30	30	50	50		
Cooling	Capacity	H/M/L	kW	11.8/9.82/8.74	13/11.23/9.83	13.5/11.5/10.1	13.5/11.5/10.1	18/15.3/13.5	18/15.3/13.5	
	Water flow rate	H	l/h	2030	2236	2322	2322	3096	3096	
	Water pressure drop	H	kPa	21.2	24.7	11.5	11.5	26.2	26.2	
Heating	Capacity	H/M/L	kW	16.5/14.05/12.23	17/14.31/12.69	17.5/14.9/13.2	17.5/14.9/13.2	23.4/19.8/17.5	23.4/19.8/17.5	
	Water pressure drop	H	kPa	17.6	20.8	10	10	24.3	24.3	
Power supply			V/ph/Hz	220-240/1/50						
Power input	H	W	220	275	236	474	360	665		
Sound pressure level	H/M/L	dB(A)	45/40/34	47/42/36	48/44/39	51/47/42	50/46/41	53/49/44		
Fan motor	Type	Low noise 4-speed fan motor								
	Quantity	2	2	1	1	1	1	1		
Fan	Type	Centrifugal, forward-curved Blades								
	Quantity	4	4	2	2	3	3	3		
Coil	Row	4								
	Max. Working pressure	MPa	1.6							
	Diameter	mm	Φ9.52							
Body	Dimensions	W×H×D	mm	1856×241×522	2022×241×522	1369×342×612	1369×342×612	1500×342×612	1500×342×612	
	Packing	W×H×D	mm	1905×260×550	2070×260×550	1421×381×619	1421×381×619	1552×381×619	1552×381×619	
	Net weight	kg	40.5	44.1	46	46	57	53.7		
	Gross weight	kg	44	49.4	49.8	50	61	58.6		
	Pipe connection	Water inlet/outlet pipe	Inch	RC3/4						
	Drain pipe	mm	OD Φ24							

Note:  
 1. H: high fan speed; M: medium fan speed; L: low fan speed.  
 2. The data is the performance in relevant external static pressure.  
 3. Cooling conditions: entering water 7°C, temperature rise 5°C, entering air temperature 27°C DB/19°C WB.  
 Heating conditions: entering water 50°C, entering air temperature 20°C DB, the same water flow as the cooling conditions.  
 4. The noise is tested in the semi-anechoic test room.

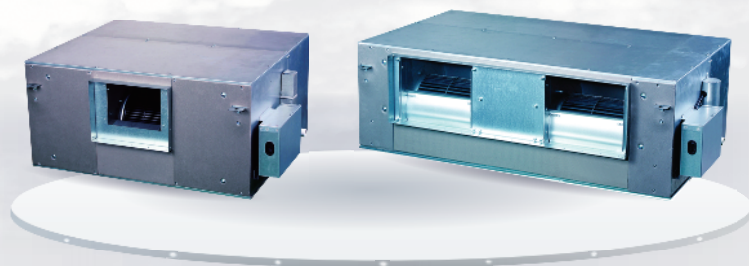
## 4-Pipe Duct

Model APFCD-			200FS12 200FS30	300FS12 300FS30	400FS12 400FS30	500FS12 500FS30	600FS12 600FS30	
Air flow	H/M/L	m <sup>3</sup> /h	340/255/170	510/385/255	680/510/340	850/640/425	1020/765/510	
	H/M/L	CFM	200/150/100	300/225/150	400/300/200	500/375/250	600/450/300	
External Static pressure			Pa	S12 models: 12; S30 models: 30				
Cooling	Capacity	H/M/L	kW	2/1.76/1.52	2.7/2.35/2.13	3.6/3.15/2.76	4.3/3.74/3.32	5/4.32/3.84
	Water flow rate	H	l/h	344	464	619	740	860
	Water pressure drop	H	kPa	7.6	14.4	8.2	9.5	17.2
Heating	Capacity	H/M/L	kW	3/2.64/2.22	4/3.48/3	5.2/4.47/3.9	5.7/5.02/4.33	7.2/6.19/5.33
	Water flow rate	H	l/h	258	344	447	490	619
	Water pressure drop	H	kPa	6.8	12.5	23.5	24.0	40.7
Power supply			V/ph/Hz	220-240/1/50				
Power input	12Pa	H	W	33	53	66	87	100
	30Pa	H	W	49	64	75	96	114
Sound pressure level	12Pa	H/M/L	dB(A)	35/32/26	36/33/27	37/34/28	40/36/30	42/38/32
	30Pa	H/M/L	dB(A)	41/37/31	42/38/32	43/39/33	44/40/34	45/41/35
Fan motor	Type	Low noise 4-speed fan motor						
	Quantity	1	1	1	1	1	1	
Fan	Type	Centrifugal, forward-curved Blades						
	Quantity	1	2	2	2	2	2	
Coil	Row	3						
	Max. Working pressure	MPa	1.6					
	Diameter	mm	Φ9.52					
Body	Dimensions	W×H×D	mm	741×241×522	841×241×522	941×241×522	941×241×522	1161×241×522
	Packing	W×H×D	mm	790×260×550	890×260×550	990×260×550	990×260×550	1210×260×550
	Net weight	kg	15.1	17.5	20.7	20.7	23.5	35.4
	Gross weight	kg	17.4	20	23.1	23.1	26.5	39.1
	Pipe connection	Water inlet/outlet pipe	Inch	RC3/4				
	Drain pipe	mm	OD Φ24					

Model APFCD-			800FS12 800FS30	1000FS12 1000FS30	1200FS12 1200FS30	1400FS12 1400FS30		
Air flow	H/M/L	m <sup>3</sup> /h	1360/1020/680	1700/1275/850	2040/1530/1020	2380/1785/1190		
	H/M/L	CFM	800/600/400	1000/750/500	1200/900/600	1400/1050/700		
External Static pressure			Pa	S12 models: 12; S30 models: 30				
Cooling	Capacity	H/M/L	kW	6.8/5.79/5.11	7.8/6.74/5.88	10.2/8.89/7.85	11.5/9.9/8.86	
	Water flow rate	H	l/h	1170	1342	1754	1978	
	Water pressure drop	H	kPa	18.8	30.0	40.3	51.9	
Heating	Capacity	H/M/L	kW	9.6/8.45/7.2	10.8/9.61/8.1	13.5/12.15/10.26	15.5/13.48/11.78	
	Water flow rate	H	l/h	826	929	1161	1333	
	Water pressure drop	H	kPa	20.7	34.7	28.6	55.2	
Power supply			V/ph/Hz	220-240/1/50				
Power input	12Pa	H	W	145	180	210	222	
	30Pa	H	W	154	193	230	278	
Sound pressure level	12Pa	H/M/L	dB(A)	43/39/33	45/41/35	46/42/36	48/44/38	
	30Pa	H/M/L	dB(A)	46/42/36	47/43/37	48/44/38	49/45/39	
Fan motor	Type	Low noise 4-speed fan motor						
	Quantity	2	2	2	2	2	2	
Fan	Type	Centrifugal, forward-curved Blades						
	Quantity	4	4	4	4	4	4	
Coil	Row	3						
	Max. Working pressure	MPa	1.6					
	Diameter	mm	Φ9.52					
Body	Dimensions	W×H×D	mm	1461×241×522	1566×241×522	1856×241×522	2022×241×522	
	Packing	W×H×D	mm	1510×260×550	1615×260×550	1905×260×550	2070×260×550	
	Net weight	kg	32.4	34.9	40	43.6		
	Gross weight	kg	36	38.6	43.5	48.9		
	Pipe connection	Water inlet/outlet pipe	Inch	RC3/4				
	Drain pipe	mm	OD Φ24					

Note:  
 1. H: high fan speed; M: medium fan speed; L: low fan speed.  
 2. The data is the performance in relevant external static pressure.  
 3. Cooling conditions: entering water 7°C, temperature rise 5°C, entering air temperature 27°C DB/19°C WB.  
 Heating conditions: entering water 70°C, entering/leaving temperature difference is 10°C, entering air temperature 20°C DB.  
 4. The noise is tested in the semi-anechoic test room.

# High static pressure duct



## Features

- 220–240V/1Ph/50Hz power supply is standard, 208-230V/1Ph/60Hz can be customized.
- High air volume, high static pressure, high capacity.
- High-pressure centrifugal fans.
- Easy to clean and change the air filter.
- Safe factory-installed electric heater is optional.
- Flexible control, remote controller and wired controller are optional.
- Standard extended drainage pan for protecting your ceiling better.
- Return air plenum and filter are standard.
- Four-speed motor with one reserved for more choice .
- Pipe connection from left or right can be selected (in factory).

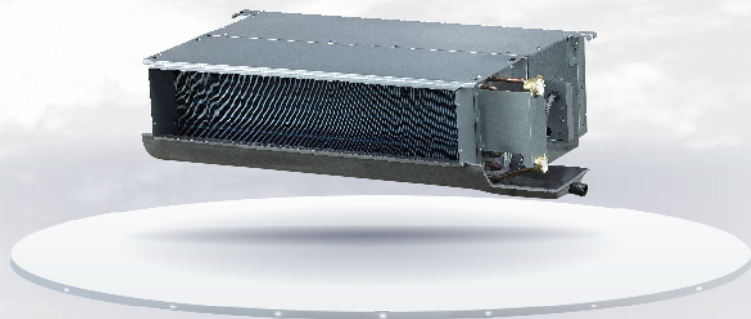


Model APFCDH-			800S70 800ES70	1000S70 1000ES70	1200S70 1200ES70	1400S70 1400ES70	
Air flow	H/M/L	m³/h	1360/1220/1090	1700/1530/1380	2040/1880/1610	2380/2120/1860	
	H/M/L	CFM	800/720/640	1000/900/810	1200/1105/950	1400/1250/1095	
External Static pressure		Pa	70	70	70	70	
Cooling	Capacity	H/M/L	kW	6.6/6.37/6.12	8.8/8.19/7.57	10/9.44/8.53	12/11.47/10.24
	Water flow rate	H	l/h	1135	1514	1720	2064
	Water pressure drop	H	kPa	8	24	24	36
Heating	Capacity	H/M/L	kW	9.7/8.54/7.18	13.2/11.48/9.9	15/12.9/11.25	17.9/15.75/13.6
	Water pressure drop	H	kPa	8.4	25	23.4	34.2
Power supply			V/ph/Hz				220-240/1/50
Power input	H	W	350	350	350	350	
Electric heater capacity ('E)			W	5000	5000	5000	5000
Sound pressure level	H/M/L	dB(A)	49/42/35	50/43/36	51/44/37	52/45/38	
Fan motor	Type	Low noise 4-speed fan motor					
	Quantity	1					
Fan	Type	Centrifugal, forward-curved Blades					
	Quantity	1					
	Row	1	3	3	4		
Coil	Max. Working pressure	MPa	1.6				
	Diameter	mm	Φ9.52				
	Dimensions (*E)	W×H×D	mm				
Body	Packing (*E)	W×H×D	mm				
	Net weight	*E	kg	50/53	52/55	52/55	54/57
	Gross weight	*E	kg	55/58	57/60	57/60	59/62
	Water inlet/outlet pipe	Inch	RC3/4				
Pipe connection	Drain pipe	mm	ODΦ32				

Model APFCDH-			1600S100 1600ES100	1800S100 1800ES100	2200S100 2200ES100	
Air flow	H/M/L	m³/h	2720/2450/2170	3060/2750/2450	3740/3360/2990	
	H/M/L	CFM	1600/1440/1280	1800/1620/1440	2200/1980/1760	
External Static pressure		Pa	100	100	100	
Cooling	Capacity	H/M/L	kW	14.1/13.03/11.87	15.8/14.6/13.46	19.9/18.58/17.24
	Water flow rate	H	l/h	2425	2718	3423
	Water pressure drop	H	kPa	52	90	130
Heating	Capacity	H/M/L	kW	21.2/18.23/15.69	23.8/20.94/17.85	30/26.7/22.5
	Water pressure drop	H	kPa	51	85	121
Power supply			V/ph/Hz			220-240/1/50
Power input	H	W	550	800	950	
Electric heater capacity ('E)			W	9500	9500	9500
Sound pressure level	H/M/L	dB(A)	54/47/40	60/53/46	61/54/47	
Fan motor	Type	Low noise 4-speed fan motor				
	Quantity	1				
Fan	Type	Centrifugal, forward-curved Blades				
	Quantity	2				
	Row	3	3	3		
Coil	Max. Working pressure	MPa	1.6			
	Diameter	mm	Φ9.52			
	Dimensions (*E)	W×H×D	mm			
Body	Packing (*E)	W×H×D	mm			
	Net weight	*E	kg	76/82	83/89	
	Gross weight	*E	kg	83/89	83/89	
	Water inlet/outlet pipe	Inch	RC3/4			
Pipe connection	Drain pipe	mm	ODΦ32			

Note:  
 1. H: high fan speed; M: medium fan speed; L: low fan speed.  
 2. The data is the performance in relevant external static pressure.  
 3. Cooling conditions: entering water 7 °C, temperature rise 5 °C, entering air temperature 27 °C DB/19 °C WB, Heating conditions: entering water 50 °C, entering air temperature 20 °C DB, the same water flow as the cooling conditions.  
 4. The noise is tested in the semi-anechoic test room.  
 5. \* for models without electric heater, E for models with electric heater.

# District cooling FCU



## Features

- 220-240V/1Ph/50Hz power supply is standard, 208-230V/1Ph/60Hz can be customized.
- Capacity range: 200CFM to 2000CFM.
- Space saving, only 242mm in height.
- Need less water, little power of water pumps, save power cost for the high temp difference.
- Standard extended drainage pan for protecting your ceiling better.
- Return air plenum and filter are standard.
- Left or right hand piping connections, field convertible.
- Four-Speed motor with one reserved for more choice.



Model APFCDT-			200	300	400	500	600	800			
Air flow	H/M/L	m <sup>3</sup> /h	340/290/200	510/430/310	680/580/410	850/720/510	1020/870/610	1360/1160/820			
	H/M/L	CFM	200/170/120	300/250/180	400/340/240	500/420/300	600/510/360	800/680/480			
External Static pressure			Pa		30	30	30	30			
Cooling	Capacity	H/M/L	kW	2/1.78/1.17	2.9/2.39/1.71	3.2/2.84/1.89	3.7/3.01/2.08	5.1/4.1/2.99	7.1/5.7/4.33		
	Water flow rate	H	l/h	205	297	328	379	522	727		
	Water pressure drop	H	kPa	3.9	5.6	6.2	7.2	9.9	13.8		
Heating	Capacity	H/M/L	kW	3/2.64/2.22	4.35/3.78/3.26	4.8/4.13/3.6	5.55/4.88/4.22	7.65/6.58/5.66	10.65/9.37/7.99		
	Water pressure drop	H	kPa	2	3.9	4.8	6	8.1	10.5		
Power supply			V/ph/Hz		220-240/1/50						
Power input			H	W	45	62	72	92	112	145	
Sound pressure level			H/M/L	dB(A)		36/33/27	38/32/28	40/34/30	42/36/31	44/39/32	45/41/32
Fan motor	Type	Low noise 4-speed fan motor									
	Quantity			1	1	1	1	1	2		
Fan	Type	Centrifugal, forward-curved Blades									
	Quantity			1	2	2	2	2	4		
Coil	Row	3									
	Max. Working pressure			MPa					1.6		
	Diameter			mm					Φ9.52		
Body	Dimensions	W×H×D	mm	741×241×522	841×241×522	941×241×522	941×241×522	1161×241×522	1461×241×522		
	Packing	W×H×D	mm	790×260×550	890×260×550	990×260×550	990×260×550	1210×260×550	1510×260×550		
	Net weight			kg		14.6	17	20.2	23	31.9	
	Gross weight			kg		16.9	19.5	22.6	26	35.5	
Pipe connection	Water inlet/outlet pipe			Inch					RC3/4		
	Drain pipe			mm					ODΦ24		

Model APFCDT-			1000	1200	1400*	1500*	2000*			
Air flow	H/M/L	m <sup>3</sup> /h	1700/1440/1020	2040/1730/1220	2380/1785/1190	2550/2100/1300	3400/2550/1700			
	H/M/L	CFM	1000/850/600	1200/1020/720	1400/1050/700	1500/1240/760	2000/1500/1000			
External Static pressure			Pa		30	30	30			
Cooling	Capacity	H/M/L	kW	7.5/6.38/4.5	9.6/8.42/4.8	10.8/9.1/8.2	11.25/9.6/8.4	15/12.3/11.3		
	Water flow rate	H	l/h	768	983	1106	1152	1536		
	Water pressure drop	H	kPa	14.6	18.7	20.3	23.5	28.7		
Heating	Capacity	H/M/L	kW	11.25/10.01/8.44	14.4/12.96/10.94	15/12.7/11.25	16.3/13.8/12.2	20.2/17.2/15.1		
	Water pressure drop	H	kPa	12.4	16.2	18.6	21.1	26.5		
Power supply			V/ph/Hz		220-240/1/50					
Power input			H	W	170	220	225	236	360	
Sound pressure level			H/M/L	dB(A)		46/40/32	47/41/32	47/42/33	48/43/35	50/46/40
Fan motor	Type	Low noise 4-speed fan motor								
	Quantity			2	2	2	1	1		
Fan	Type	Centrifugal, forward-curved Blades								
	Quantity			4	4	4	2	3		
Coil	Row	3								
	Max. Working pressure			MPa			1.6			
	Diameter			mm			Φ9.52			
Body	Dimensions	W×H×D	mm	1566×241×522	1856×241×522	2022×241×522	1369×342×612	1500×342×612		
	Packing	W×H×D	mm	1615×260×550	1905×260×550	2070×260×550	1421×381×619	1552×381×619		
	Net weight			kg		34.4	39.5	43.1	46	57
	Gross weight			kg		38.1	43	48.4	49.8	61
Pipe connection	Water inlet/outlet pipe			Inch			RC3/4			
	Drain pipe			mm			ODΦ24			

Note:

1. H: high fan speed; M: medium fan speed; L: low fan speed.
2. The data is the performance in relevant external static pressure.
3. Cooling conditions: entering water 7.2 °C, temperature rise 8.4 °C, entering air temperature 26.7 °C DB/19.4 °C WB.
4. Heating conditions: entering water 60 °C, entering air temperature 21.1 °C DB/15.6 °C WB, the same water flow as the cooling conditions.
5. \*APFCDT-1400, APFCDT-1500, APFCDT-2000 units need to customize.